



Orchestre National de Jazz SHUT-UP & DANCE

Technical rider

(mise à jour 1st november 2011)

Hello!

Here is our technical rider.

Would you be so kind as to send us:

- Your program, other bands on the same stage, soundcheck schedules;
- A map of your town indicating the venue, the hotel, the train station, the restaurant...

Thank's to provide :

- Dressing rooms for 16 people, with mirrors, an iron, a nice and healthy catering, including local specialities...

l- Local transportation from station to hotel, to venue, back to hotel after the concert and back to the station the next morning.

- Local technical team :

- * 1 Stage technician
- * 1 Sound technician an 1 assistant
- * 1 Light Engineer and 1 assistant
- * 1 backliner

For any technical information, please contact Yves Le Guen:

Mobile: 33(0)6 84 26 45 48

Email: yleguen@pleinelune.fr

ONJ Technical team

- | | |
|--------------------|----------------------------|
| • Yves Le Guen | Coordination, tour manager |
| • Boris DARLEY | F.O.H sound engineer |
| • Gilles OLIVESI | Monitors engineer |
| • Guillaume TESSON | Light |

We generally need 2 hours of technical set-up with your team and 2 hours of soundcheck, that is 4 hours at all.

SOUND

Audio Patch

N°	Source	Micro	Stand
1	Bass Drum	Audix D6 / Beyer M 88	Small
2	Bass Drum Hit	RE 20 / M 88	Floor tripod
3	Snare	Béta 56 / béta 57	Small
4	Tom bass 1	Audix D4 / SM 98 / M 88	Small
5	Tom bass 2	Audix D4 / SM 98 / M 88	Small
6	Tom alto	Audix D2 / SM 98	Small
7-8	Overhead	2 x C414 / KM 184 / Schoep	Tall x2
9	Snare 2	Béta 56 / béta 57	Small
10			
11	Bass	DI BSS AR 133	
12	Bass Amp	akg 414	Tall
13-14	Piano	2 x Audix SCX 25	Clamp x2
15-16	Piano monitors	2 x SM 98	Foam
17	Guitare Amp	Shure SM 7	Small
18	Acoustic Guitare	DI BSS AR 133	
19	banjo	Audix SCX1 hyperC / oktava hyperC	Small
20			
21-22	Stéréo Keyboard	2 x DI BSS AR 133	
23	Keyboard 2 LEAD	DI BSS AR 133	
24	Rhodes	Shure SM 7	Small
25-26	Clarinet 1	2 x ND 468	Tall & Small
27-28	Clarinet 2	2 x ND 468	Tall & Small
29	Sax	ND 468	Tall
30	Sax MIDI	DI BSS AR 133	
31	Trumpet	Musician Personal Microphone	clamp
32	Flute (pianist)	Audix OM 7	Tall
33	Flute FX (flutist)	Di BSS AR 133 (micro fourni)	Tall
34	Flute Solo	SM58 + DI BSS AR 133	Tall
35	Ténor Solo	TLM 103	Tall
36	Alto Solo	même ligne que 35	
37	Baryton Solo	même ligne que 35	
38	Speak	HF dynamique	Tall
39	Talk back Face	dynamique interrupteur	
40	Talk back Retours	dynamique interrupteur	

3 Stage Patches of 12 lines (10m)

11 small boom stands, 1 floor tripod and 11 tall boom stands

2 lines should be wired from FOH to monitors

Mixage FACADE:

1 **digital mixer** (MIDAS PRO6, Soundcraft Vi, DIGICO, Yamaha PM5-D, Digidesign D-Show, Innovason)
40 mikes IN + 4 **stéréo Returns (FX) Groups VCA**, 12 AUX send
1 réverb lexicon PCM 91 (spare)
1 multi-effects T.C. Electronic M 2000 (spare)
1 little speaker with volume control (line wired at FOH from monitor mixer)
1 CD player

FOH sound engineer travel with his computer for effects and reverbs. Please provide a support for the computer on the mixer.

FOH mixing position must be in the audience, in the center of the venue, not more than 2/3 of the length of the hall, not under a balcony and not close to the back wall.

FOH system:

A good quality system with subs, clusters and delayed systems if necessary (C. Heill, D&B,...)
Power and technology should be adapted to the venue.

MONITORS:

1 **Digital mixer** (Soundcraft Vi1, DIGICO SD9, M7CL) 40 entrées micros
14 AUX sends: 12 sends Wedges / 2 sends FX
1 PCM 91 ou 1 TC M2000
1 little speaker with volume control (line wired at monitor mixer from FOH)
1 CD player

VERY IMPORTANT: The monitor mixer and 1 wedge has to be set up as on the stage draw and will be placed between the keyboards et bass amp (as on the stage draw). Wedges amp will be placed on the sides of the stage. Only stage boxes must be behind monitor mixer. We know that it is not a usual set-up , but it is the best for this program and is not complicated.

Diffusion RETOURS:

12 good quality monitors (Heil, D&B, amadeus, Nexo...) amps and filters + 1 wedge for engineer .

Wedges will be mainly 12" .

For the drummer wedges will be 8" or 10" and place on the side of him at ears level.

The drummer controls the volume of his monitor himself , thanks to a passive device we bring.
Please provide a back and forth XLR insert in between the monitor desk and the drummer monitor (insert between the EQ and amps. Circuit number 3 & 4)

Miscellaneous :

No modification of this rider without the OK of our engineers.

Les horaires et temps de balance seront à discuter avec les musiciens et le régisseur général du groupe.

Technical crew of ONJ should access at the venue 2 hours before the sound check for preparing it.

Mixing boards and system should be working when technicians arrive.

contact FOH : Face: Boris Darley – +33 6 11 19 43 04 / boris.darley@club-internet.fr

contact Monitors : Gilles Olivesi – +33 6 12 77 57 33 / golivesi@mac.com

BACKLINE / STAGE

14 music stands with lights

220 Volts AC (wired on the sound) and many multiple socket devices adapted to european plugs for guitar, bass, flute, keyboards all over the stage.

4 flat comfortable chairs without armrests and 2 bar stools with footrests

4 risers 2 x 1m, Height: 0,20 m

Please allow 4 meters minimum in between the piano and the FOH sound

Drums

If the room is flat, please provide a podium 2m x 2m, 20cm High.

1 "Jazz Standard" set: Yamaha, Gretch, Pearl, Ludwig, Mapex, DW, Tama.... with:
rémo ambassador heads

1 x 20" bassdrum with kick pedal and heads without holes

2 snares (4"1/2 et 5"1/2) 1 wood, 1 metal (no piccolo), with 2 snare stands

1 x 12' tom rigged on the bass drum.

1 x 14' floor tom and 1x 16' floor tom (on 3 feet, no hanging toms please)

4 cymbal stands with bolts and felts

1 hi-hat stand with a tilter and felts,

1 adjustable round drum stool, 2m x 2m carpet, tuning key, spare 20' and 14' heads.

Claviers

1 Fender Rhodes MK2 or MK1, 73 or 88 notes, tuned according to the acoustic piano.

1 Hot Rod Deluxe Fender amp (ou 1 Fender Twin reverb)

1 round and large drum stool

1 table 100cm x 60cm

AC

Guitar

1 Banjo

1 Fender Hotrod Deluxe amp (or 1 Twin reverb)

1 flight case to raise the amp

2 guitar stands

AC

Basse

1 amp David Eden + 1 David Eden 4 x 10" speaker.

or Markbass + 4 x 10" speaker

or 1 Ashdown + 4 x 10" speaker

Please, no Galien-Kruger, SWR, or Trace Elliot

1 electric bass stand

1 bar stool

AC and 2 multiple sockets

Piano

1 concert piano (Yamaha S6, C7 or C6) tuned in the morning ,pref 440Hz (instead 442Hz) and retuned just before the concert

1 adjustable piano bench

Flûte

1 table (env 0,80m x 0,40m, Height 0,80m) with a black cover.

AC

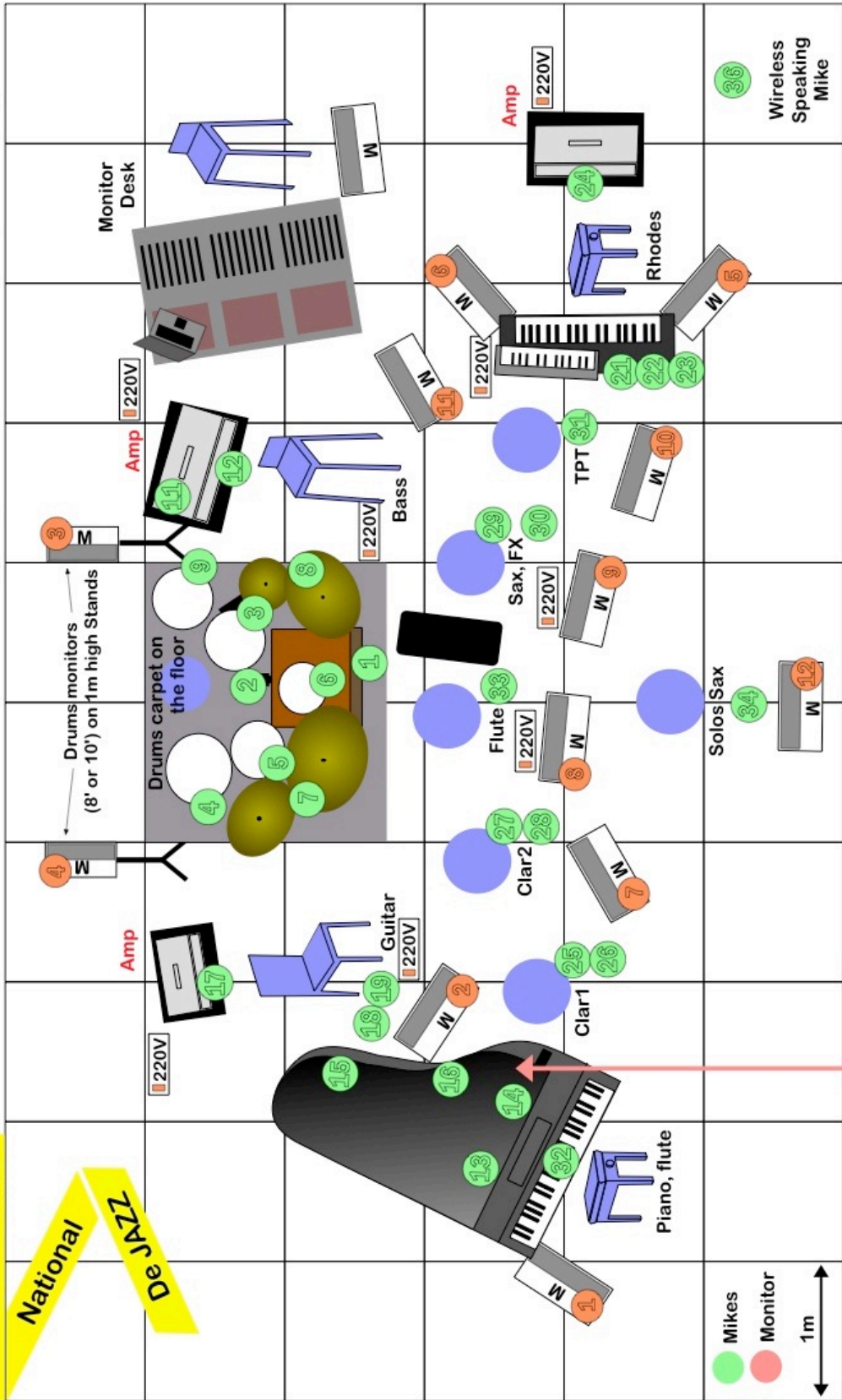
Sax

AC

SHUT UP & DANCE - Stage plot (oct 11th, 2011)

Orchestre | DANIEL YVINEC

National
DE JAZZ



AUDIENCE

Contact: technical director
Yves Leguen: +33 6 84 26 45 48
yleguen@pleinelune.fr

4 meters minimum between
First P.A. & piano mikes

SHUT UP AND DANCE
 - Lighting Rider -

Lighting plot and patch list attached.

Please send me the plot of your theater (autocad appreciated).
 The light plot shall be hung, circuited, patched, colored and ready for focus upon companies arrival to venue.

Lighting equipments to provide:

Dimmers: 64 x 3kW + 9 fluos.

Projecteurs: 16 PC 1kW.
 45 PAR 64
 28 CP62
 14 CP61
 3 CP60
 8 profiles 1kW 614 Juliat (16-35°) + 6 gobo holder.
 4 profiles 1kW 613 Juliat (28-54°) + 4 gobo holder.
 1 profiles 1kW 714 Juliat (15-40°)
 2 profiles 1kW 713 Juliat (29-50°) + 2 gobo holder.
 20 cylos 1kW ADB ACP 1001.
 9 solo dimmable fluo lights daylight
 9 micro stands. (to hang the fluos + colsons)

Haze: Haze machine **MDG** (no fog!).
 If your haze machine is not a MDG, please contact me.

Filters:

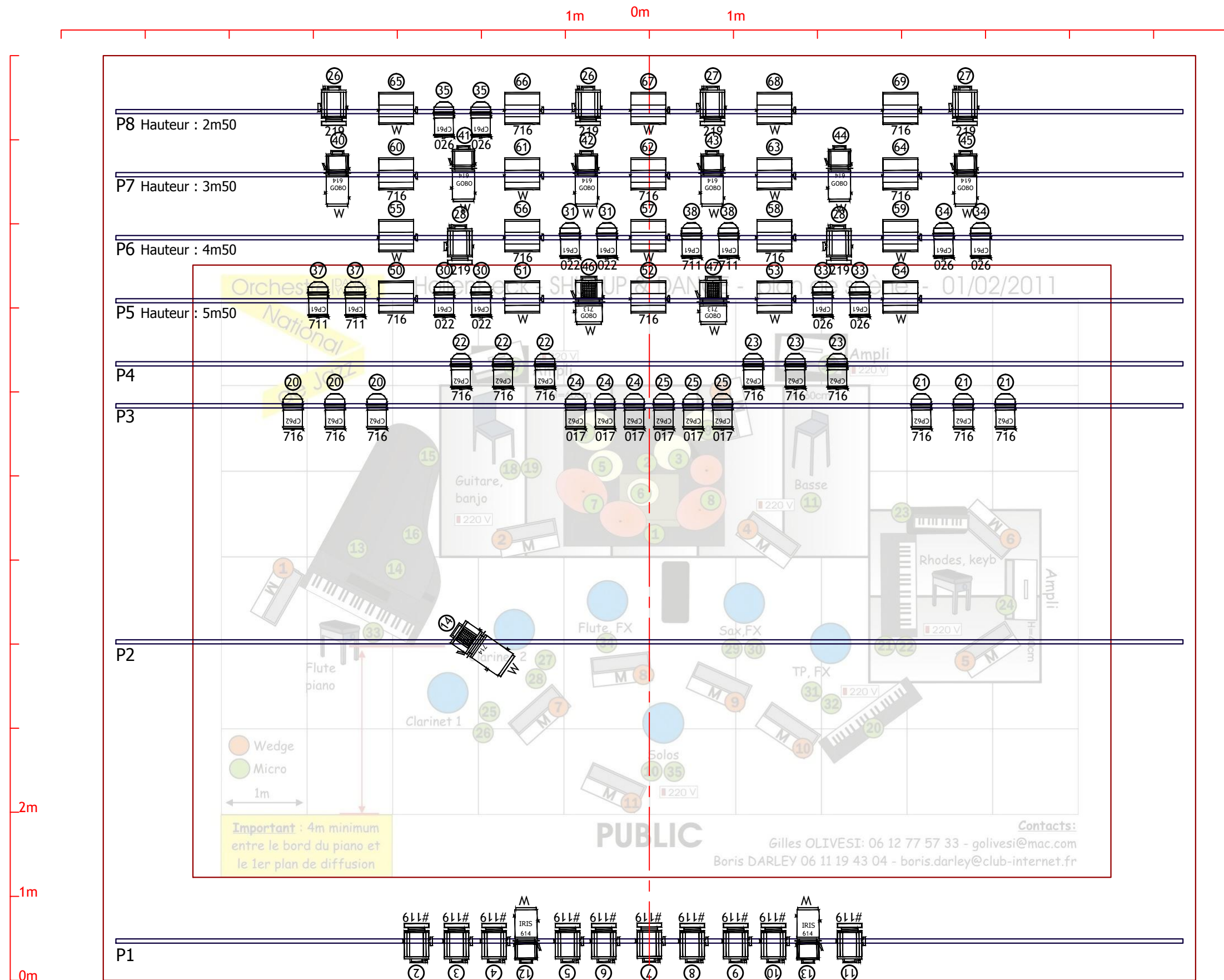
Référence	PC 1kW	Déc 1kW	Cycliodes	PAR
Lee 017				6
Lee 022				6
Lee 026				8
Lee 205				6
Lee 219	6			
Lee 711				7
Lee 716			9	12
#119	10	2		

Contact:

Régie lumière:
 Guillaume Tesson
 06 81 06 82 10
moultmoultmoult@gmail.com

19/04/11, older ones are out of date.

Don't hesitate to contact me. Every problem has its solution.



Perche de face

+ Face générale en W + #114 sur le circuit 1 pour saluts.

Shut Up and Dance

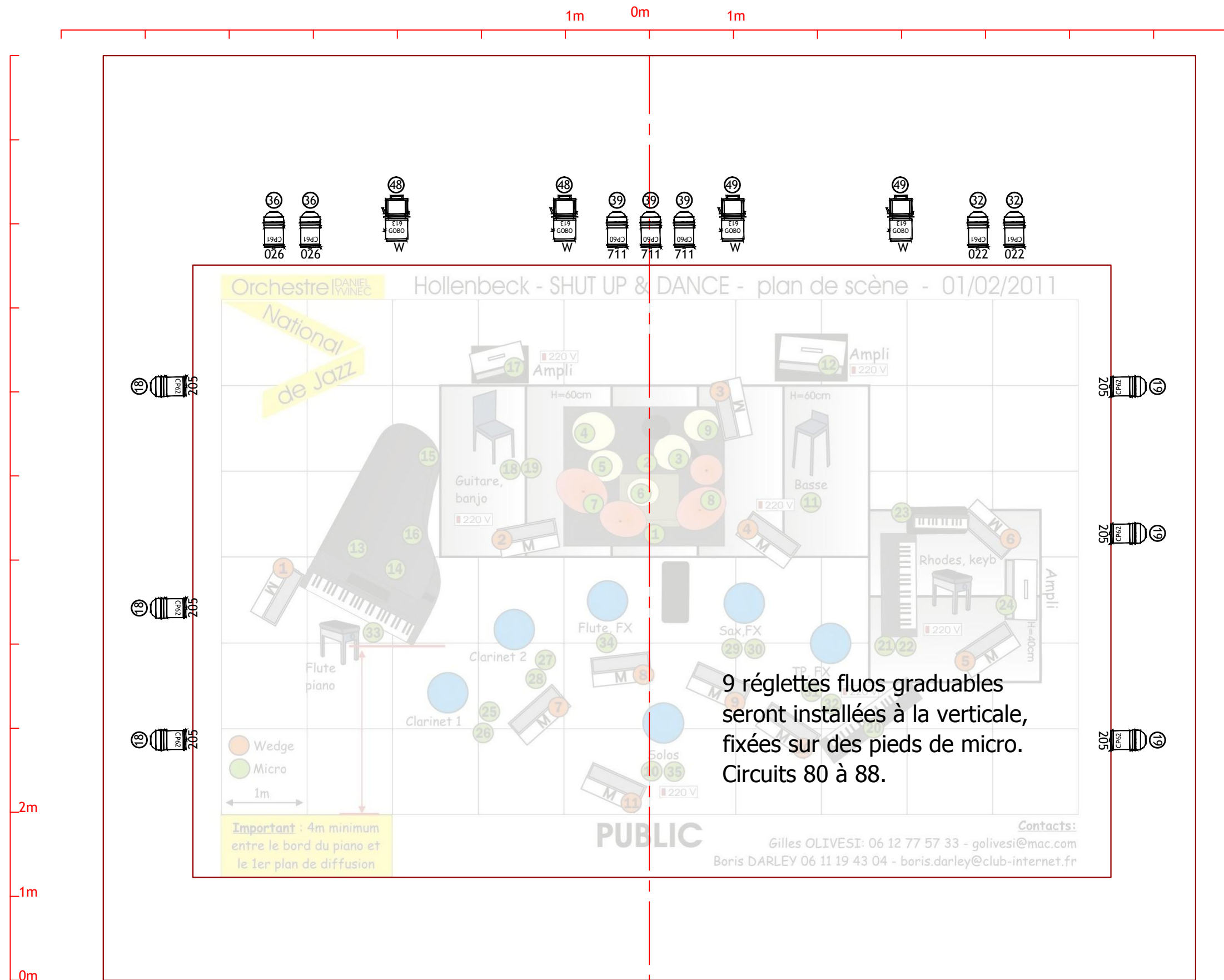
Plan Gril



Guillaume Tesson
06 81 06 82 10
moultmoultmoult@gmail.com

DATE: 19/04/11

ECHELLE: 1/50 en A3



Patch Shut Up and Dance

CIRCUIT	Dimmer	Perche	Count	Name	Lampe	Filtre	Frost
1		Face	5	PC 1kW		W	#114
2		1	1	PC 1kW		W	#119
3		1	1	PC 1kW		W	#119
4		1	1	PC 1kW		W	#119
5		1	1	PC 1kW		W	#119
6		1	1	PC 1kW		W	#119
7		1	1	PC 1kW		W	#119
8		1	1	PC 1kW		W	#119
9		1	1	PC 1kW		W	#119
10		1	1	PC 1kW		W	#119
11		1	1	PC 1kW		W	#119
12		1	1	Découpe 614		W	#119
13		1	1	Découpe 614		W	#119
14		2	1	Découpe 714		W	
15							
16							
17							
18		Sol	3	Par64	CP62	L205	
19		Sol	3	Par64	CP62	L205	
20		3	3	Par64	CP62	L716	
21		3	3	Par64	CP62	L716	
22		4	3	Par64	CP62	L716	
23		4	3	Par64	CP62	L716	
24		2	3	Par64	CP62	L017	
25		2	3	Par64	CP62	L017	
26		8	2	PC 1kW		L219	
27		8	2	PC 1kW		L219	
28		6	2	PC 1kW		L219	
29							
30		5	2	Par64	CP61	L022	
31		6	2	Par64	CP61	L022	
32		Sol	2	Par64	CP61	L022	
33		5	2	Par64	CP61	L026	
34		6	2	Par64	CP61	L026	
35		8	2	Par64	CP61	L026	
36		Sol	2	Par64	CP61	L026	
37		5	2	Par64	CP62	L711	
38		6	2	Par64	CP62	L711	
39		Sol	3	Par64	CP60	L711	
40		7	1	Découpe 614	Gobo	W	
41		7	1	Découpe 614	Gobo	W	
42		7	1	Découpe 614	Gobo	W	
43		7	1	Découpe 614	Gobo	W	
44		7	1	Découpe 614	Gobo	W	
45		7	1	Découpe 614	Gobo	W	
46		5	1	Découpe 713	Gobo	W	
47		5	1	Découpe 713	Gobo	W	

Patch Shut Up and Dance

CIRCUIT	Dimmer	Perche	Count	Name	Lampe	Filtre	Frost
48		Sol	2	Découpe 613	Gobo	W	
49		Sol	2	Découpe 613	Gobo	W	
50		5	2	Cycliode ACP1001		L716	
51		5	2	Cycliode ACP1001		W	
52		5	2	Cycliode ACP1001		L716	
53		5	2	Cycliode ACP1001		W	
54		5	2	Cycliode ACP1001		W	
55		6	2	Cycliode ACP1001		W	
56		6	2	Cycliode ACP1001		L716	
57		6	2	Cycliode ACP1001		W	
58		6	2	Cycliode ACP1001		L716	
59		6	2	Cycliode ACP1001		W	
60		7	2	Cycliode ACP1001		L716	
61		7	2	Cycliode ACP1001		W	
62		7	2	Cycliode ACP1001		L716	
63		7	2	Cycliode ACP1001		W	
64		7	1	Cycliode ACP1001		L716	
65		8	2	Cycliode ACP1001		W	
66		8	2	Cycliode ACP1001		L716	
67		8	2	Cycliode ACP1001		W	
68		8	2	Cycliode ACP1001		W	
69		8	2	Cycliode ACP1001		L716	
70							
80		Sol	1	Réglette Fluo		Daylight	
81		Sol	1	Réglette Fluo		Daylight	
82		Sol	1	Réglette Fluo		Daylight	
83		Sol	1	Réglette Fluo		Daylight	
84		Sol	1	Réglette Fluo		Daylight	
85		Sol	1	Réglette Fluo		Daylight	
86		Sol	1	Réglette Fluo		Daylight	
87		Sol	1	Réglette Fluo		Daylight	
88		Sol	1	Réglette Fluo		Daylight	